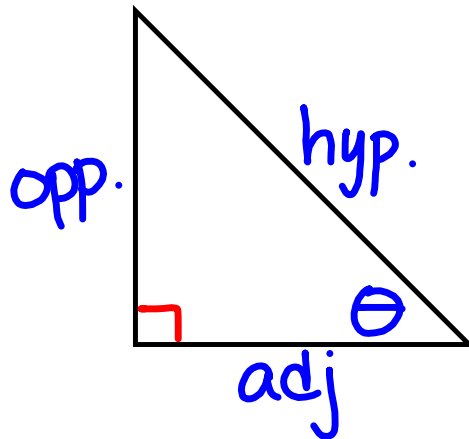


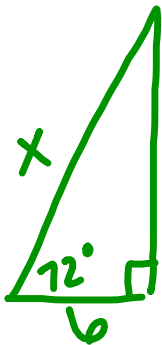
$$\sin \theta = \frac{\text{opp.}}{\text{hyp.}}$$

$$\cos \theta = \frac{\text{adj.}}{\text{hyp.}}$$

$$\tan \theta = \frac{\text{opp.}}{\text{adj.}}$$



①



$$\cos 72^\circ = \frac{6}{x}$$

$$x \cos 72^\circ = 6$$

$$x = \frac{6}{\cos 72^\circ}$$

$$x = 19.4$$