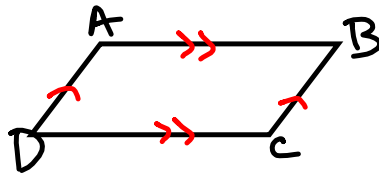


## 6.2 Properties of Parallelograms

Objective: Use properties of parallelograms to find missing information.

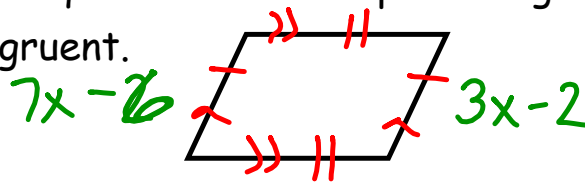
A parallelogram is a quadrilateral with both pairs of opposite sides parallel.



Parallelogram symbol:

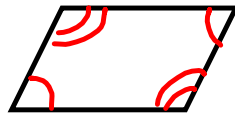


Theorem: If a quadrilateral is a parallelogram, then its opposite sides are congruent.

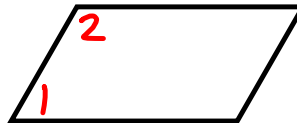


Checkpoint at the bottom of page 310.

Theorem: If a quadrilateral is a parallelogram, then its opposite angles are congruent.

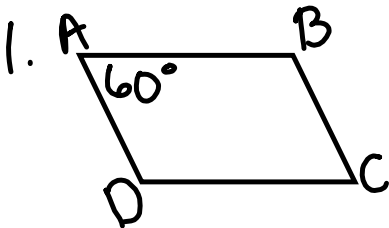


Theorem: If a quadrilateral is a parallelogram, then its consecutive angles are supplementary.



$$m\angle 1 + m\angle 2 = 180^\circ$$

Checkpoint at the bottom of page 311.



Theorem: If a quadrilateral is a parallelogram, then its diagonals bisect each other.

